

# STEERING COMMITTEE INPUT

The Perspectives 2040 Steering Committee will play a vital role in the development of this plan.

This section features input we received from them at their initial meeting.

# STEERING COMMITTEE

- The Project Steering Committee participated in three exercises to share their thoughts on Greene County. Their results are on the following slides.

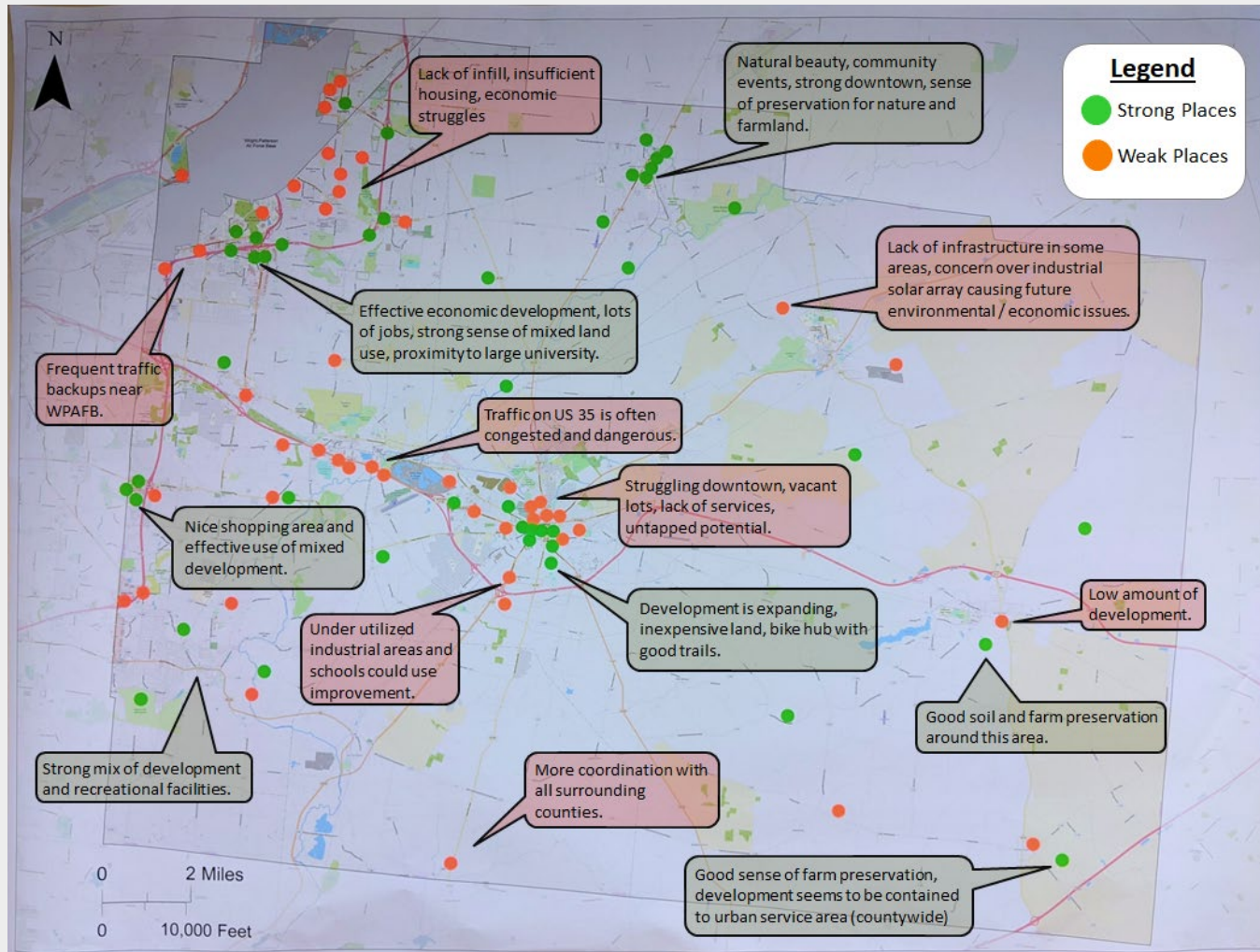
**Strong Places/Weak Places Mapping Exercise:** *Steering Committee members were asked to identify three places that have a positive impact on Greene County and three places that have a negative impact on Greene County.*

**Greene County Tomorrow Word Exercise:** *Steering Committee members were asked to provide three words or phrases to describe what they want Greene County to be in the future.*

**Opportunity Places Mapping Exercise:** *Steering Committee members were asked to identify three places that they thought could be improved or made better in the future.*



# STRONG & WEAK PLACES



This map shows the Steering Committee results for the Strong & Weak Places exercise. **Green dots** show strong places and **orange dots** show weak places. The text boxes show some of the comments about the places they identified.

*Note: The dots represent general areas and are not intended to be precise.*



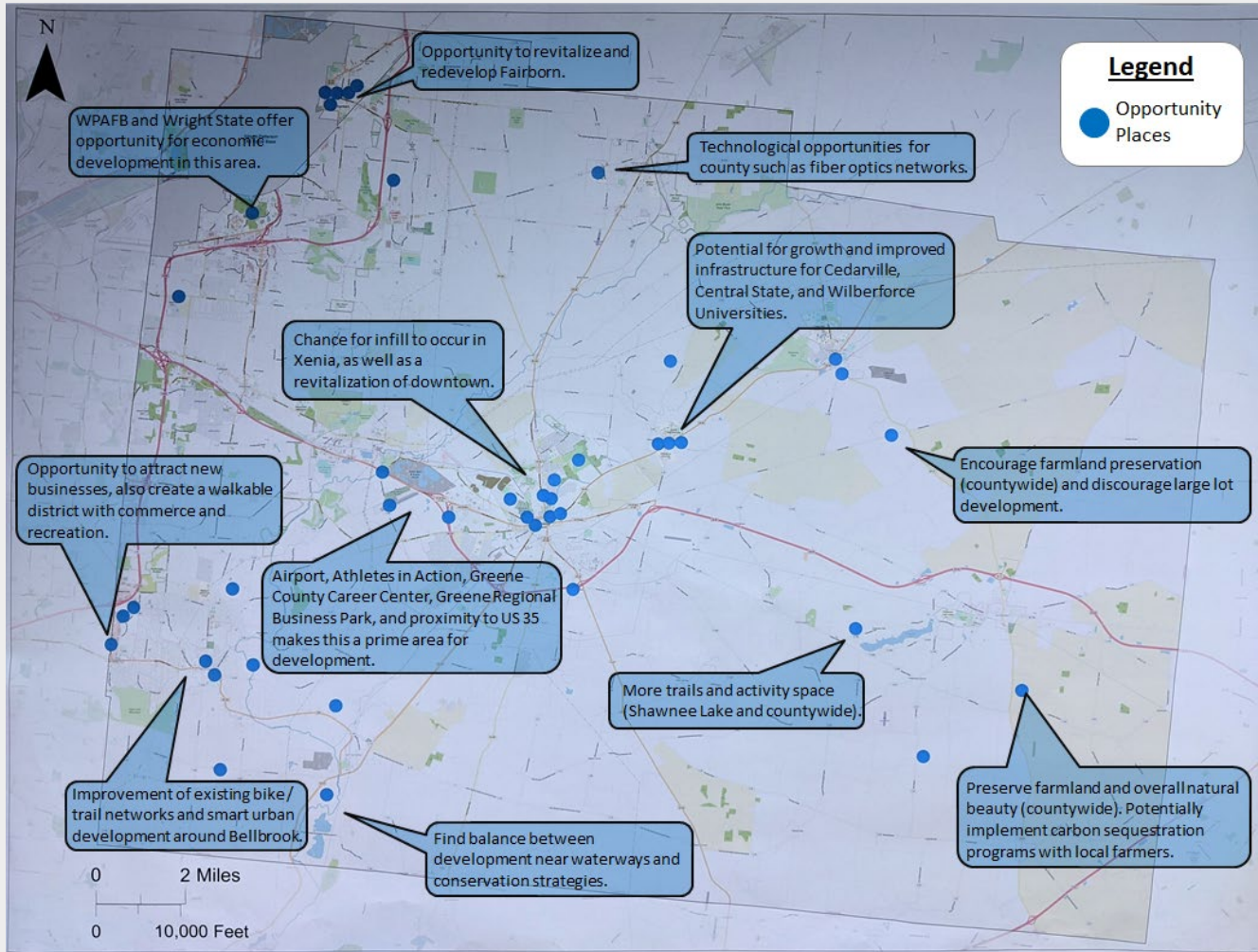
# GREENE COUNTY TOMORROW

Steering Committee members were asked to think of three words or phrases that describe the Greene County they want to see in the future. Several common themes were uncovered and are shown in this word cloud.

*Note: The larger the phrase/word, the more prevalent it was in the responses.*



# OPPORTUNITY PLACES



This map shows the Steering Committee results for the Opportunity Places exercise. **Blue dots** show the places that they thought had potential or could be made better in the future. The text boxes show some of the comments about the places they identified.

*Note: The dots represent general areas and are not intended to be precise.*